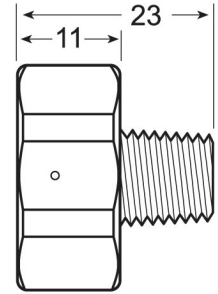
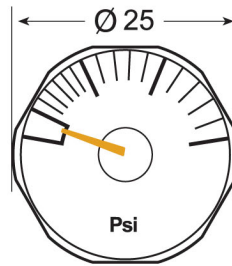


MINIATURE PRESSURE GAUGE

MODEL: 1182



Applications:

Suitable for pumps, portable compressors, industrial machinery, hydraulic, pneumatic systems, instrument and pressurized vessels.

Operating temperature:

Ambient: -40+60 °C

Medium: 100 °C maximum

Specification:

Dial size: 23mm, 25mm, 35mm in hexagon

Case: Brass chrome plated case and socket

Window: Plastic

Dial plate: Aluminum

Pointer: Painted copper

Tube: Stainless steel spiral tube

Entry: Center back, 1/8"NPT, 1/8"BSP, 1/8"BSPT, M10x 1, 1/4"NPT, 1/4"BSP, 1/4"BSPT

Range: 0-100psi/7bar, to 0-6000psi/400bar

Accuracy: +/-4%

Option: Oxygen service for option

How to order:

Model - Dial size - Thread connection - Pressure range

1182 - 25 - 1/4"NPT - 0-200psi