

## **STAINLESS STEEL CASE CRIMPED RING, LIQUID FILLABLE MODEL: 1203**



### **Specifications:**

**Normal size:**

63mm, 100mm

**Design:**

EN 837-1

**Accuracy class:**

63mm: 1.6

100mm: 1

**Scale range:**

Pressure: -1 to 1000bar

Vacuum: -1bar to 0

Compound: -1 to 24bar

or other equivalent units of pressure or vacuum

**Operating temperature:**

Ambient: -40+70 deg C

Medium: +70 deg C

**Protection class:** IP 65

### **Applications:**

- Measuring pressure of gas or liquid which is non-corrosive, explosive and no crystallization, precipitation. The most notable character is they can test pressure properly even installed on violent vibration machine or equipment.
- Applicable to working environment with intense vibration, machinery and equipment operational for a long time.

### **Material:**

Case: Stainless steel

Bezel ring: Crimped ring w/groove on case

Window: Polycarbonate

Standard filling: Glycerin

Dial plate: Aluminum, pointer stop, white background. Black marking for single scale, black and red for dual scale.

Pointer: Black aluminum

Bourdon tube: Copper alloy

<100bar: C shape

≥100bar: Helical type

Connection: Brass

Movement: Brass

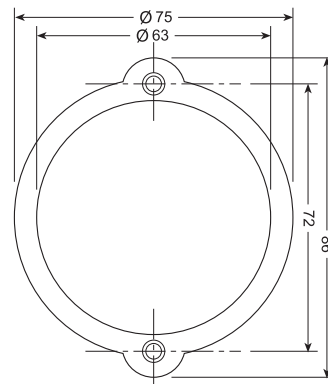
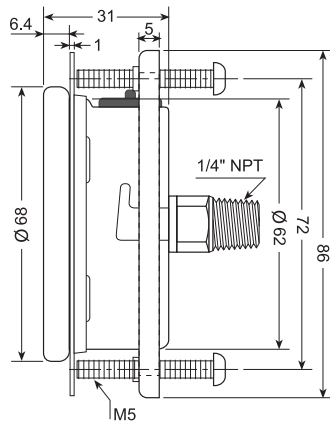
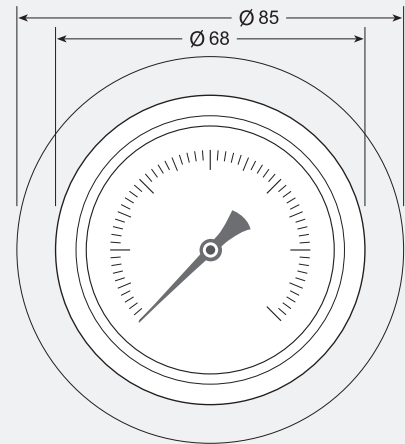
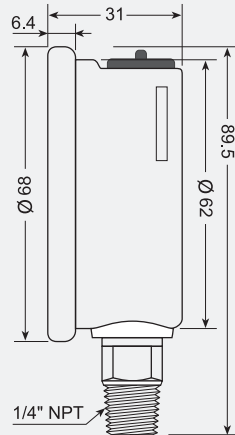
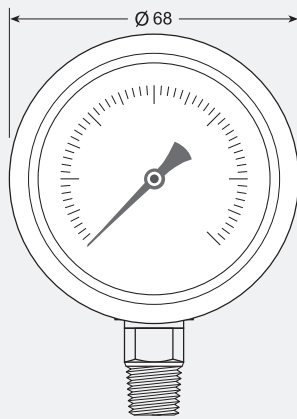
### **Connection:**

63mm, 100mm: 1/4"BSP

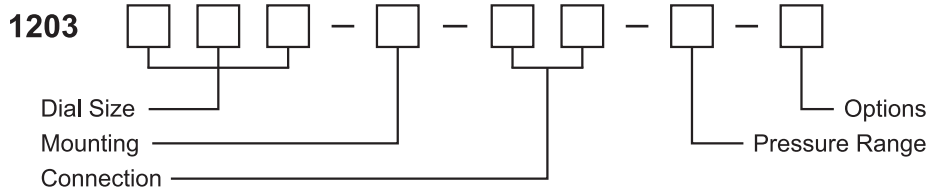
100mm: 1/2"BSP

### **Options:**

- NPT, BSPT or other process connection
- Restrictor (RS)
- Double dial range or other dial ranges
- Silicone oil filling, refrigeration scale
- Adjustable pointer for 100mm for option



## How to order:



### Code Dial Size

050	50mm (2")
063	63mm (2.5")
100	100mm (4")
150	150mm (6")

### Options

See options

### Code Mounting

A	Bottom Connection
B	Back Connection
C	Bottom Connection with back flange
E	Back Connection with front flange
F	Back Connection with Lens-clamp

### Code Connection

4	1/4"
2	1/2"
N	NPT
B	BSP with end stub
T	BSPT

### Pressure Range

See Standard Pressure Ranges

### Code Liquid filling

D	Dry but fillable
G	Glycerin
S	Silicone