

1450 SERIES ALL STAINLESS STEEL DIAPHRAGM PRESSURE GAUGE MODEL:1450



Applications:

1450 series diaphragm gauge is for use in processes where the media is contaminated and/or highly viscous. The stainless steel wetted parts ensure excellent chemical resistance to various media.

Specifications:

Nominal sizes:

4", 6"

Accuracy:

Pressure range lower than 25mbar : +/- 2.5%

Pressure range since 25mbar and up : +/- 1.6%

Scale Range, according to EN 837-1/5

Diaphragm diameter 160mm:

Pressure ranges: 0 to 16/25/40/60/100/160/250mbar

Diaphragm diameter 100mm:

Pressure ranges: 0 to 0.4/0.6/1/1.6/2.5/4/6/10/16/25/40bar

Vacuum range: -1 to 0bar

Compound range: -1 to 1.5/3/5/9bar

Operating Temperature:

Ambient: -20°C to 60°C, medium: 100°C maximum

Material Specification:

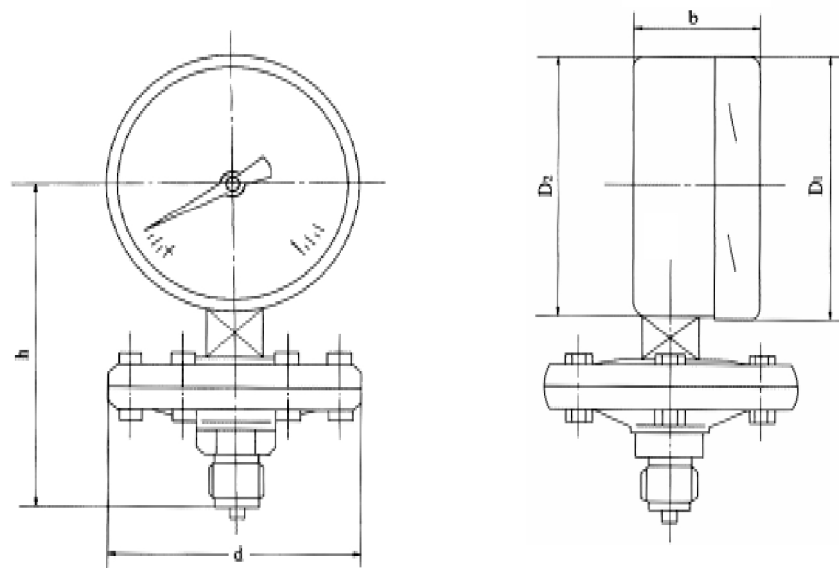
Case : 304 stainless steel case and DIN bayonet ring
 Window: laminated safety glass
 Connection: 316 stainless steel
 Diaphragm: 316 Stainless steel
 Movement: 304 stainless steel

Options:

NPT, BSPT or other process connection
 Non-standard dial range
 Wetted parts with PTFE coating or lining
 Special wetted parts like HC, Monel
 Standard or special flange connection.

*** DCS200 series flange**

DIMENSION:



DIAL SIZE	kPa	d	b	D1	D2	h
4"	≤ 25	Ø160	49.5	101	99	135
6"	≤ 25	Ø160	49.5	161	159	165
4"	≥ 40	Ø100	49.5	101	99	135
6"	≥ 40	Ø100	49.5	161	159	165

dimensions are approximate and can be changed without prior notice