

## 3020 PRESSURE TRANSMITTER MODEL:3020



Industrial pressure transmitter  
Flush diaphragm type

### Features & Benefits

- Stainless steel wetted parts
- Excellent resistance to corrosive
- Small figure design, any position to install
- Various signal output
- OEM process to fit application of the customers

### Descriptions

3020 Series industrial pressure transmitter adopt high performance chips, and deal with the special amplified chip, integrative configuration, and smart profile, they are widely used in the field of hydraulic pressure, medicament and sanitation, constant pressure water supply system and so on.

### Specifications

Ranges: -100KPa~0KPa~2500bar

Combined error:  $\pm 0.25\%FS$ ;  $\pm 0.5\%FS$ ,  $\pm 1.0\%FS$

Output: 4~20mA, 0~20mA, 0~5V, 0~10V

Input voltage: 24Vdc (10~36Vdc)

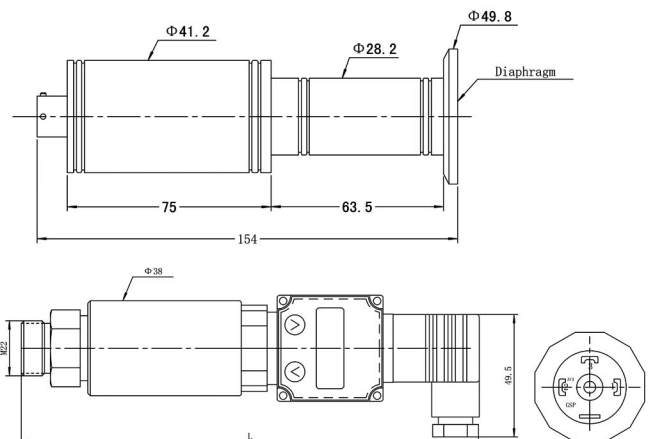
Operating temperature:  $-40^{\circ}C \sim 125^{\circ}C$

Over pressure:  $1.5 \times FS$

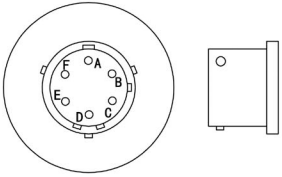
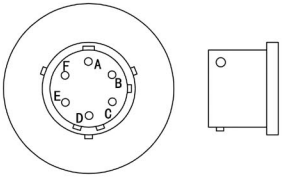


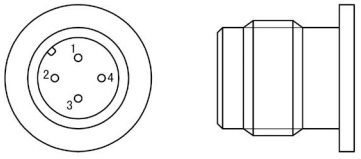
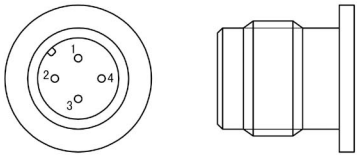
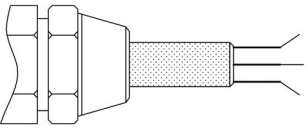
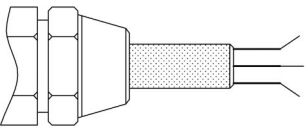
Electric connection: M12 connector, five  
Pin bendix connector

Hirschmann and direct down-lead

Process connection: G1/4, M20 $\times$ 1.5,  
1/4NPT (Customized)



### Dimensions:

<b>Models</b>	<b>Lead</b>	<b>Color</b>	<b>6PIN</b>	
Output: 0-5V; 0-10V 3020 Series	Signal +	Blue	A	
	Signal -	Green	B	
	Excitation +	Red	C	
	Excitation -	Yellow	D	
<b>Models</b>	<b>Lead</b>	<b>Color</b>	<b>6PIN</b>	
Output: 4-20mA 3020 Series	Excitation +/ Signal +	Red	A	
	Excitation -/ Signal -	Black	B	
<b>Models</b>	<b>Lead</b>	<b>Color</b>	<b>4PIN</b>	
Output: 0-5V; 0-10V DIN43650 3020 Series	Excitation +	Red	1	
	Signal +	Blue	2	
	Excitation -/ Signal -	White	3	
<b>Models</b>	<b>Lead</b>	<b>Color</b>	<b>4 PIN</b>	
Output:4-20mA Hirschmann DIN43650 3020 Series	Excitation +/ Signal +	Red	1	
	Excitation -/ Signal -	Black	2	
<b>Models</b>	<b>Lead</b>	<b>Color</b>	<b>4PIN</b>	
Output: 0-5V; 0-10V M12 × 1 3020 Series	Excitation +	Red	1	
	Signal +	Blue	3	
	Excitation -/ Signal -	White	4	
<b>Models</b>	<b>Lead</b>	<b>Color</b>	<b>4 PIN</b>	
Output: 4-20mA M12 × 1 3020 Series	Excitation +/ Signal +	Red	1	
	Excitation -/ Signal -	Black	3	
<b>Models</b>	<b>Lead</b>	<b>Color</b>		
Output: 0-5V; 0-10V Cable 3020 Series	Signal +	Blue		
	Signal -	Green/White		
	Excitation +	Red		
	Excitation -	Yellow		
<b>Models</b>	<b>Lead</b>	<b>Color</b>		
Output: 4-20mA Cable 3020 Series	Excitation +/ Signal +	Red		
	Excitation -/ Signal -	Black		